

ASDO RECESSED BOLLARDS - DIN 19703

INLAND PORT

Bollardhead		NiPo200 - 300	NiPo500	HaRi200
Mooring line force* [kN]		200 - 300	500	200
Typ		recessed bollard	recessed bollard	mooring ring
a _p	[mm]	380	380	380
b _p	[mm]	580	580	580
h _p	[mm]	745	745	745
e _s	[mm]	500	500	500
Castmaterial:		EN-GJL-250	EN-GJS-500 & G20Mn5+QT	EN-GJL-250
Anchorage		NiPo200 - 300	NiPo500	HaRi200
Quantity	[St.]		10	
Anchors	[mm]		DIN EN 10025-2 - 8 x 50 x 600	
Screws	[-]		DIN EN ISO 4018 - M 16 x 50 - 4.8	

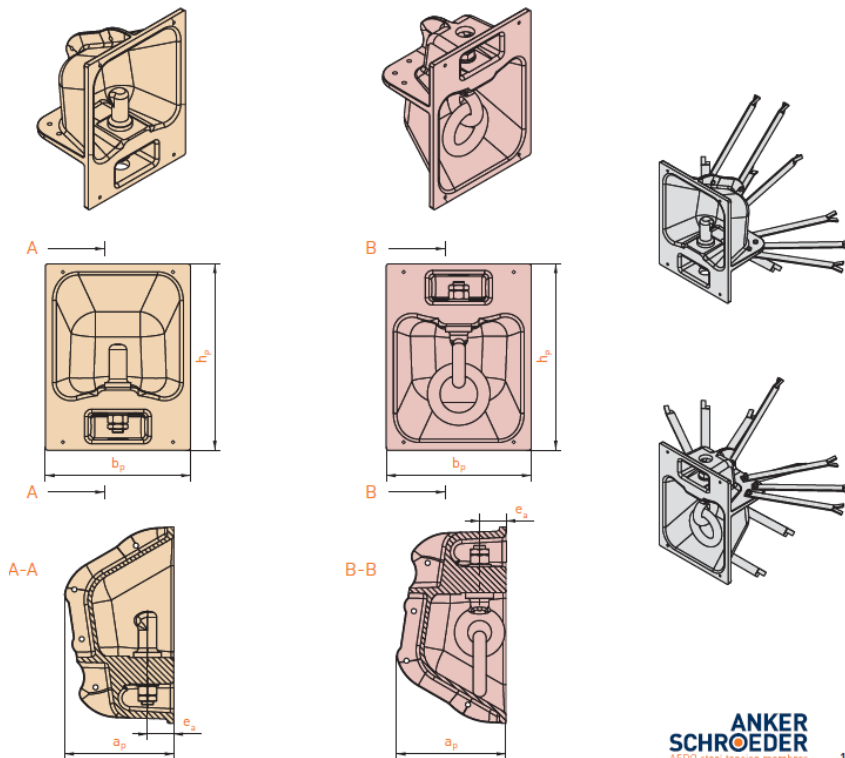
*Direction of mooring line pull as EAU 2012



Type NiPo

Type HaRi

Anchorage



ASDO WELDED MOORING PINS

Mooring Pins

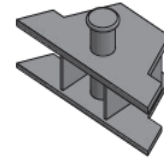
A range of barge mooring systems can be supplied both for steel sheet pile or mass concrete walls, the illustrations opposite show typical designs.

For steel sheet pile walls retaining plate profiles are supplied to match the relevant 'U' or 'Z' pile section, these are welded on site direct to the sheet pile. For concrete constructions templates and moulds can be supplied for inclusion in formwork prior to casting. Designs can be adapted to suit higher loads or additional cross-bars, static calculations for all options can be provided on request at time of order to allow verification of the bollard.

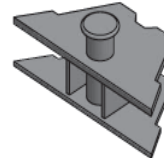
ASDO wall moorings have the added advantage that two welded spacer plates are provided to prevent twist occurring to the mooring pin, this aids installation on site and provides a more robust mooring. We can also offer an interchangeable spigot by providing a screwed connection rather than welded.

The ASDO Bargeholder is a fully enclosed mooring pin set inside a welded steel box and can be supplied for steel 'H' piles or cast directly in concrete walls with suitable anchor bars.

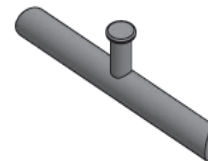
Anker Schroeder recommend that mooring pins are constructed with maximum over-load protection similar to the anchor bolts on page 3. By ensuring the pin fails in a ductile fashion under excess load limits the risk of breakaway induced accelerations, a potential danger for people and facilities in the vicinity. Safety collars can be provided which ensures the plastic deformation of the material occurs in a pre-designed location allowing the mooring pin to be stripped off rather than the whole construction. Please contact our technical department for more information.



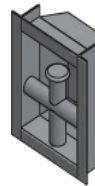
Mooring Pin for U-Pile



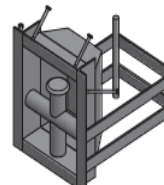
Mooring Pin for Z-Pile



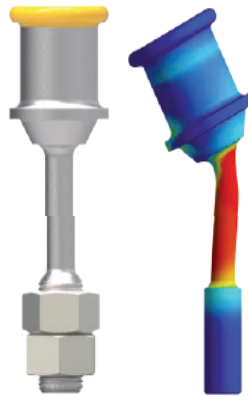
Bargeholder for U- & Z-Pile



Bargeholder for H-Pile

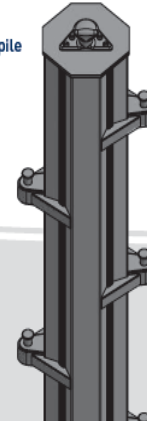


Bargeholder for Concretewall



Safety-Bollard-Pin

Mooring Pin for mooring pile



ADC Maritime, La Bergerie 63920 Peschadoires France

SAS au capital de 5000€- 827 530 676 RCS Clermont-Ferrand
SIRET 827 530 676 00010 : TVA N° FR 36 827 530 676 : Code APE 4614Z

www.adc-maritime.fr